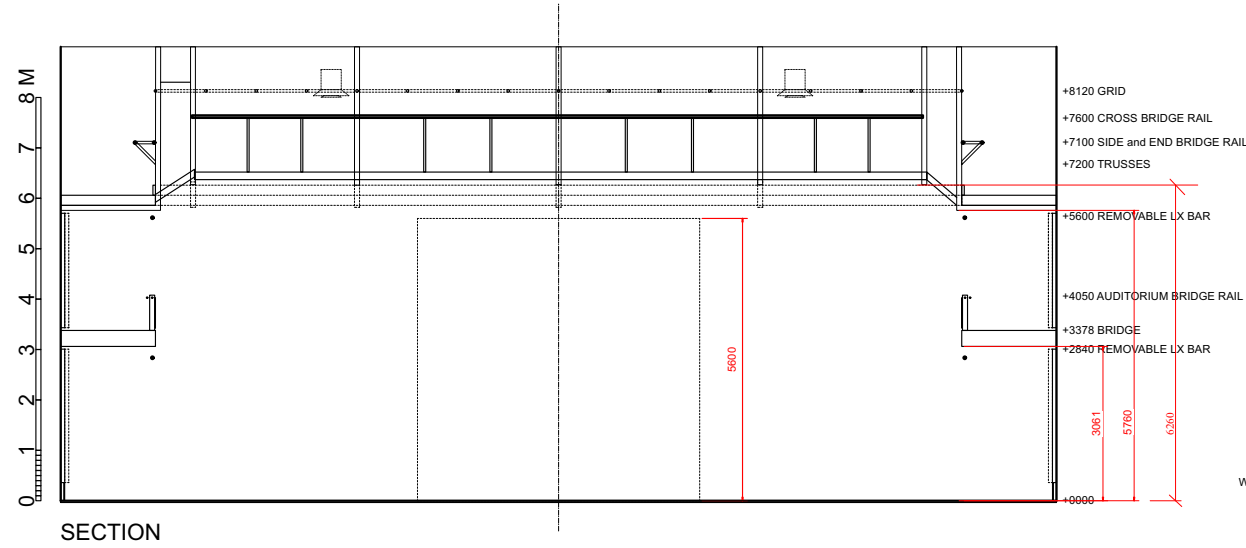


TRUSS NOTES:  
 Type: Triangular Slick Tri-lite  
 Number: Length/Hoist max load/Truss weight/Net Weight

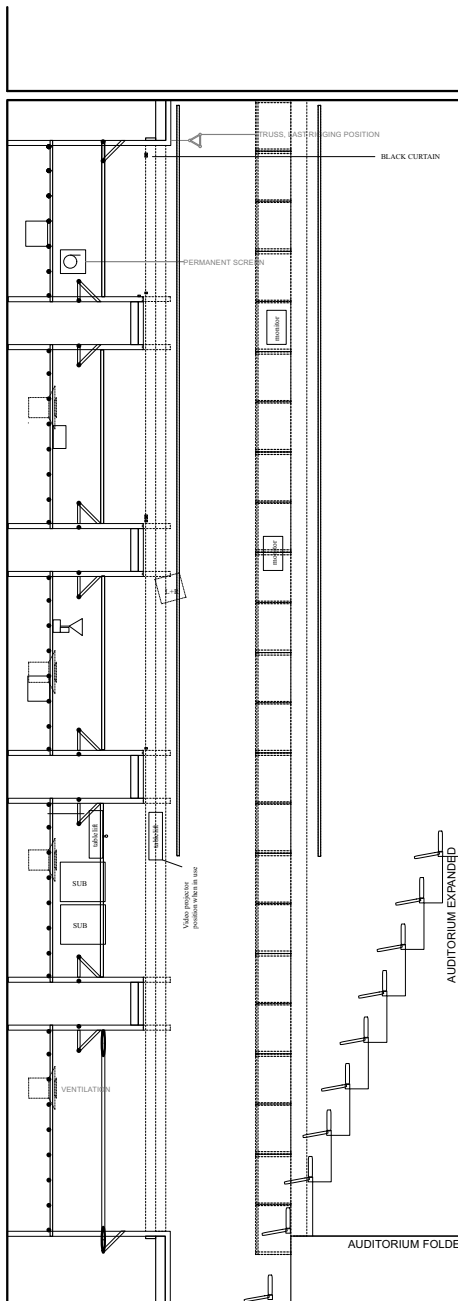
Truss 8: 11m/ 250kg/ 38,5kg/ 211,5kg  
 Truss 7: 11m/ 150kg/ 38,5kg/ 111,5kg  
 Truss 6: 15m/ 250kg/ 52,5kg/ 197,5kg  
 Truss 5: 15m/ 250kg/ 52,5kg/ 197,5kg  
 Truss 4: 12m/ 250kg/ 42kg/ 208kg  
 Truss 3: 14m/ 250kg/ 49kg/ 201kg  
 Truss 2: 15m/ 250kg/ 52,5kg/ 197,5kg  
 Truss 1: 15m/ 180kg/ 52,5kg/ 127,5kg

Truss 2 max height is 5950mm  
 Trusses 2 and 4 midsection is not available for rigging

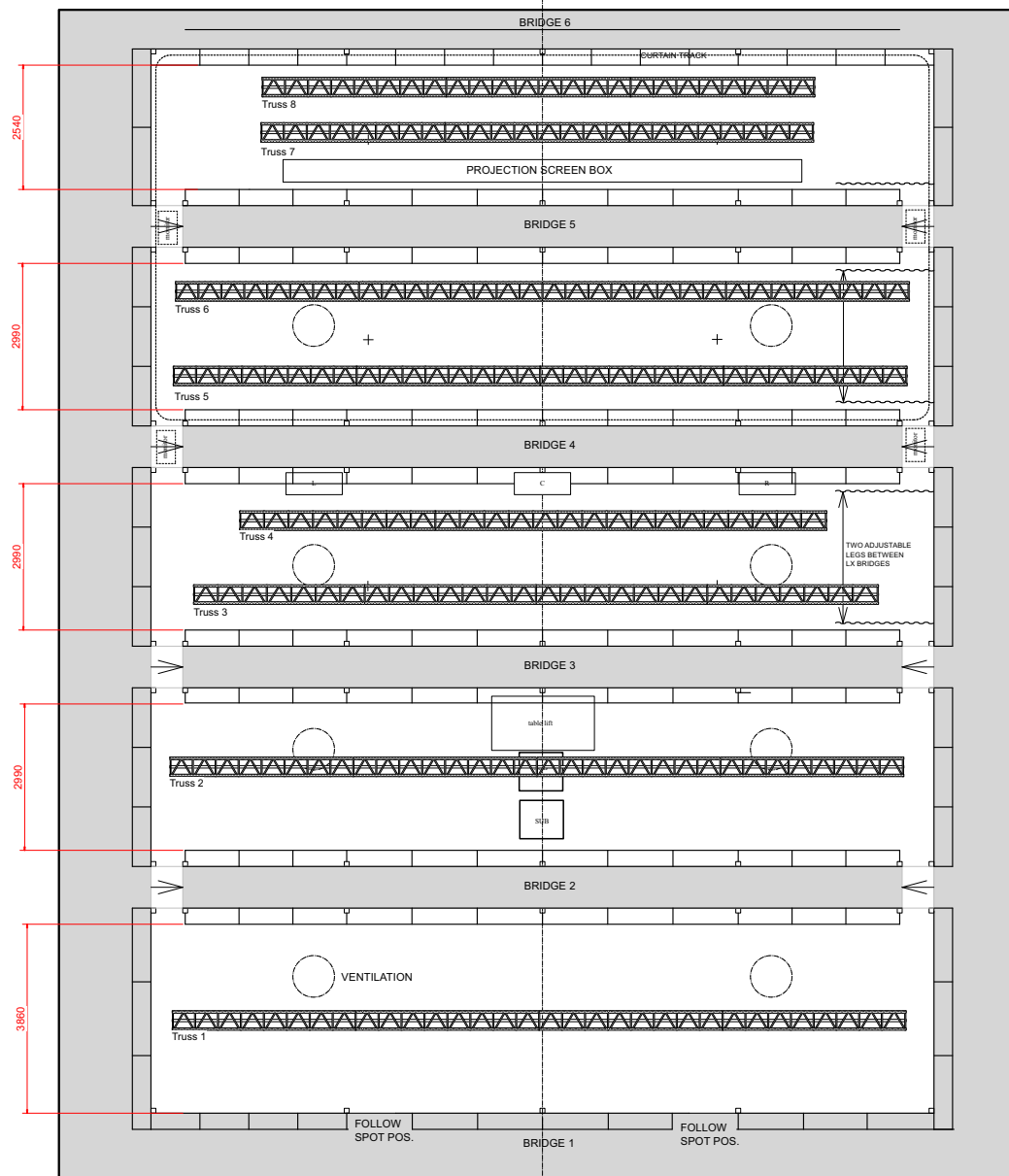
HELSINGIN KAUPUNKI  
**STOA**  
 TEATTERISALI  
 THEATRE HALL  
 Turunlinnantie 1 00900 Helsinki Finland



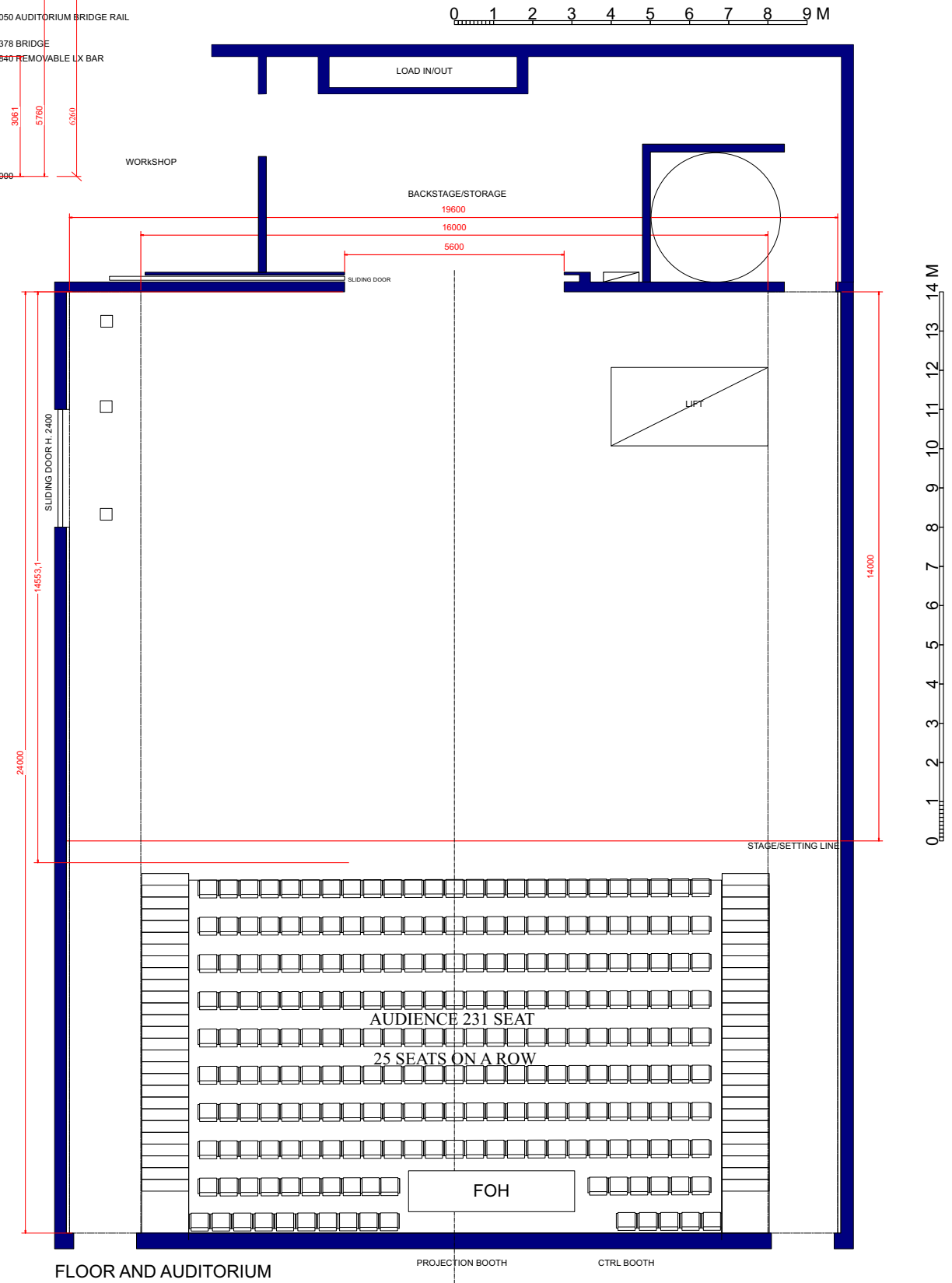
SECTION



SECTION



LIGHTING BRIDGES



FLOOR AND AUDITORIUM